

# FC400-CCL-FA FC400-DAC-FA FC400-EIP-FA FC400-ECT-FA

DIN-RAIL MOUNT DIGITAL INDICATOR

EtherCAT EtherNet/IP CE RoHS2



## Applicable from fast response measurement to multi-weighing with high accuracy!

FC400-CCL-FA: A measurement system can be configured easily using CC-Link network.

FC400-DAC-FA: Either voltage or current output, corresponding to the indicated value, is available.

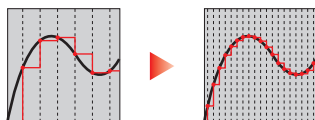
FC400-EIP-FA: A measurement system can be configured easily using EtherNet/IP network.

FC400-ECT-FA: A measurement system can be configured easily using EtherCAT network.

### High sampling rate & resolution

High-Speed A/D conversion and powerful digital processing capability of 2400 times/sec.

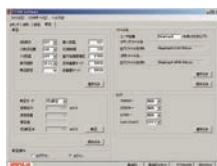
High display resolution of 1/100000 (max).



Measurement can be performed quickly and precisely due to high speed A/D conversion.

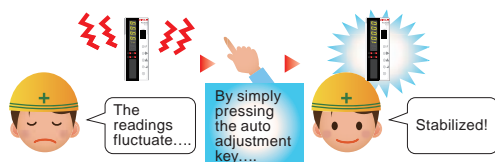
### Application software for USB interface

With communication through USB interface, logging, graph display, setting parameters, and calibration can be done.



### High performance filter & Auto filter adjustment

With combination of low pass filter (0.1 to 600Hz) which corresponds to various vibration and moving average filter (OFF, 2 to 999) that is effective for periodic vibration, automatic searching for optimal value with accuracy and stability can be achieved. (You can manually adjust settings too)



### Compact size

It can be fit into a limited space!

Light weight & compact body for 35mm DIN rail mount.



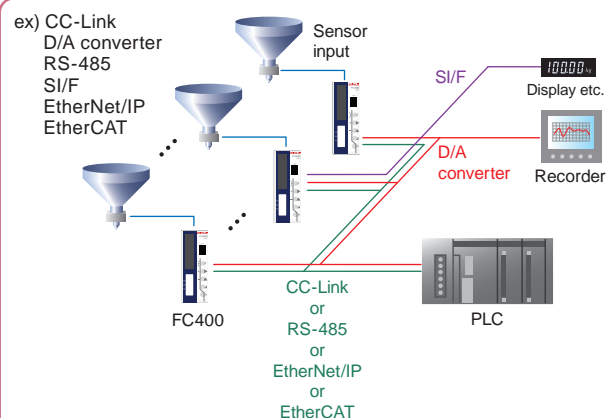
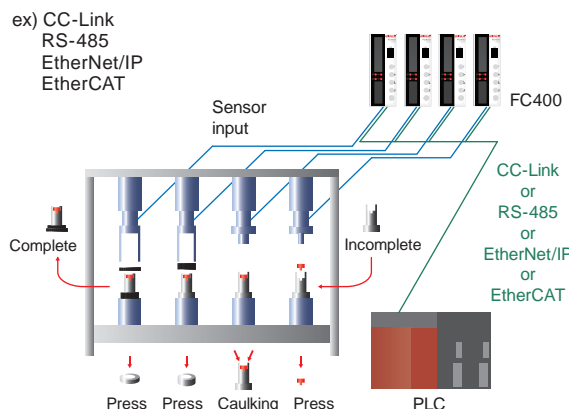
### Various interfaces

FC400-CCL-FA: Equipped with CC-Link, SI/F, USB interface

FC400-DAC-FA: Equipped with D/A converter, RS-485, USB interface

FC400-EIP-FA: Equipped with EtherNet/IP and USB interface

FC400-ECT-FA: Equipped with EtherCAT and USB interface



ex) USB



## Digital peak & bottom hold, Hi & Lo function

Quickly detect high speed changes & make OK / NOK judgement

## Equivalent input calibration

Theoretical calibration can be performed easily by registering the capacity and rated output of load cells.

## Input conversion value display

The output signal level of load cell can be displayed in mV/V/ for monitor purpose.  
Malfunction indicator or faulty sensor can be differentiated easily.

## 6-digit display

24bit A/D converter enables 6-digit display

## Specifications

|                 |                        |   |
|-----------------|------------------------|---|
| Analog          | Excitation voltage     | DC5V±5% Output current : Within 90mA<br>DC2.5V±5% Output current : Within 45mA<br>(depending on settings)<br>Ratiometric method<br>(Up to 6 350 load cells can be connected in parallel)            |
|                 | Signal input range     | −3.9 to 3.9mV/V   |
|                 | Zero adjustment range  | Automatic adjustment by digital processing −3.0 to 3.0mV/V  |
|                 | Span adjustment range  | Automatic adjustment by digital processing 0.01 to 3.8mV/V  |
|                 | Min. input sensitivity | 0.15μV/count  |
|                 | Accuracy               | Non-linearity: within 0.01%FS<br>Zero drift: 0.0002%FS/°C typ.<br>Gain drift: 1ppm/°C typ.  |
|                 | Filter                 | Digital low-pass filter 0.1 to 600 Hz<br>Moving average filter OFF, 2 to 999 times  |
| Display         | A/D converter          | Speed: 2400 times/sec<br>Resolution: 24bit  |
|                 | Display unit           | Character height 8mm<br>Numerical display by 7-segment green LED  |
|                 | Display value          | Up to 6 digits.   |
|                 | Display frequency      | Selectable from 1, 3, 6, 13, 25 times/sec.  |
| Status display  |                        | RUN, SD, RD, ERR (FC400-CCL-FA)   |
|                 |                        | MS, NS (FC400-EIP-FA)<br>RUN, ERR (FC400-ECT-FA)  |
| Hold            |                        | Sample, Peak, Bottom, Peak&Bottom, Average  |
| External signal | Output signal (5)      | Transistor's open collector output<br>V <sub>ceo</sub> =30V, I <sub>c</sub> =50mA   |
|                 | Input signal (3)       | Selectable/configurable<br>Input is ON when shorted to COM terminal by contact (relay switch, etc.) or non contact (transistor, open collector, etc.).<br>*DC24V external power supply is required. |

\*EtherNet/IP is a registered trademark of ODVA.

\*EtherCAT® is a registered trademark and patented technology, licensed by Beckhoff Automation GmbH, Germany.

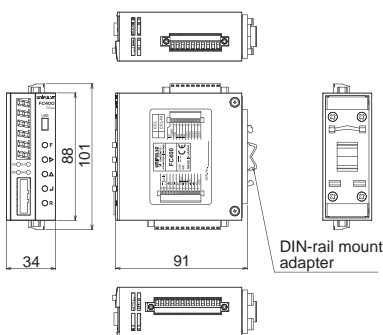
|                          |   |
|--------------------------|---|
| Interface                | CC-Link interface (FC400-CCL-FA)  |
|                          | D/A converter (Voltage and current output) (FC400-DAC-FA)   |
|                          | EtherNet/IP interface (FC400-EIP-FA)  |
|                          | EtherCAT interface (FC400-ECT-FA)   |
|                          | RS-485 interface (Selectable from Modbus-RTU or UNI-Format) (FC400-DAC-FA)  |
| General specification    | SI/F 2-wire type serial interface (FC400-CCL-FA)  |
|                          | USB interface   |
|                          | Power supply voltage DC24V (±15%)   |
|                          | Power consumption 3W typ. (FC400-DAC-FA)<br>4W typ. (FC400-CCL-FA, FC400-EIP-FA, FC400-ECT-FA)  |
|                          | Operating conditions Temperature: Operating temperature range: -10 to +50°C<br>Storage temperature range: -20 to +85°C<br>Humidity: 85%RH or less (non-condensing)  |
| Dimensions               | 34 (W) x 88 (H) x 91 (D) mm (Projections excluded)  |
|                          | Weight Approx. 210g (FC400-CCL-FA, FC400-DAC-FA)<br>Approx. 230g (FC400-EIP-FA, FC400-ECT-FA)   |
| Attachment               | Quick manual...2  |
|                          | Jumper wire...2   |
| Accessories              | Mini driver...1   |
|                          | CC-Link connector...1 (FC400-CCL-FA)  |
| CE MARKING CERTIFICATION | Various I/O connector...FC400-CCL-FA, FC400-EIP-FA, FC400-ECT-FA:2, FC400-DAC-FA:3  |
|                          | CA81-USB: miniUSB-computer USB cable 1.8m<br>CN74: CC-Link connector (Same accessory as the attached one)<br>CN75: CC-Link connector (Y type branch connector)<br>CN76: CC-Link connector (Terminator connector)<br>CN87: 10p connector for external I/O (Same accessory as the attached one)<br>CN85: 13p connector for power source/sensor/RS-485 (Same accessory as the attached one)<br>CN86: 3p connector D/A converter (Same accessory as the attached one) |

## Structure of product code

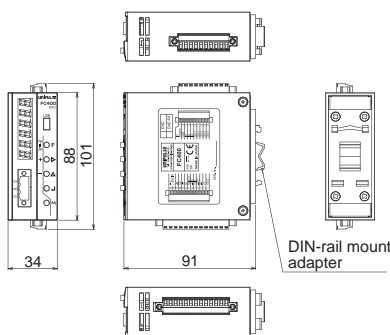
| Model        | Interface   |
|--------------|---|
| FC400-CCL-FA | CC-Link, SI/F, USB                                      |
| FC400-DAC-FA | D/A converter (Voltage and current output), RS-485, USB |
| FC400-EIP-FA | EtherNet/IP, USB  |
| FC400-ECT-FA | EtherCAT, USB   |

## External dimension

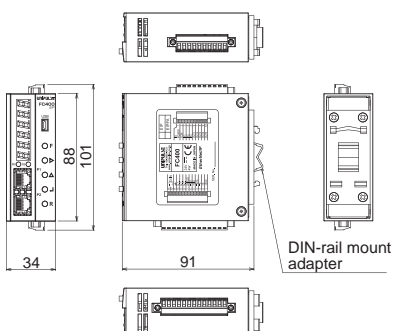
### ■ FC400-CCL-FA



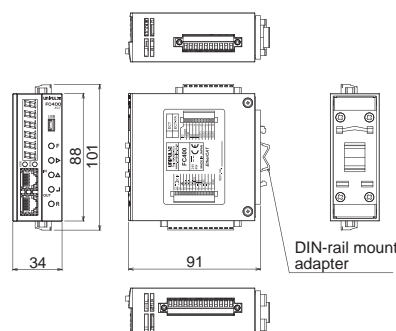
### ■ FC400-DAC-FA



### ■ FC400-EIP-FA



### ■ FC400-ECT-FA



Unit:mm