

UNTCH

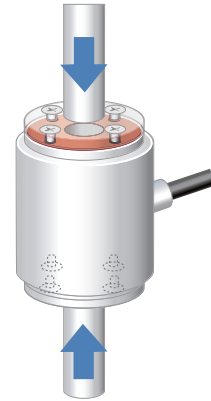
CENTER-HOLE TYPE LOAD CELL



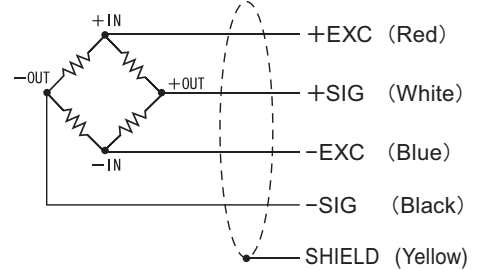
Specifications

Model	UNTCH-5KN, UNTCH-10KN, UNTCH-20KN, UNTCH-50KN, UNTCH-100KN	
Rated capacity	5k, 10k, 20k, 50k, 100k	N
Rated output	1±1%	mV/V
Safe overload	120	%R.C.
Zero balance	±5	%R.O.
Non-linearity	0.5	%R.O.
Hysteresis	0.5	%R.O.
Compensated temperature range	-10 to +70	°C
Safe temperature range	-30 to +80	°C
Temperature effect on zero	0.1	%R.O./10°C
Temperature effect on span	0.1	%R.O./10°C
Input resistance	Approx. 350	Ω
Output resistance	Approx. 350	Ω
Recommended excitation voltage	10	V
Maximum excitation voltage	20	V
Insulation resistance(DC50V)	2000 or more	MΩ
Cable	φ6 4 conductor shield cable 3m End treatment 5 leads.	
Load cell material	Special alloy steel	

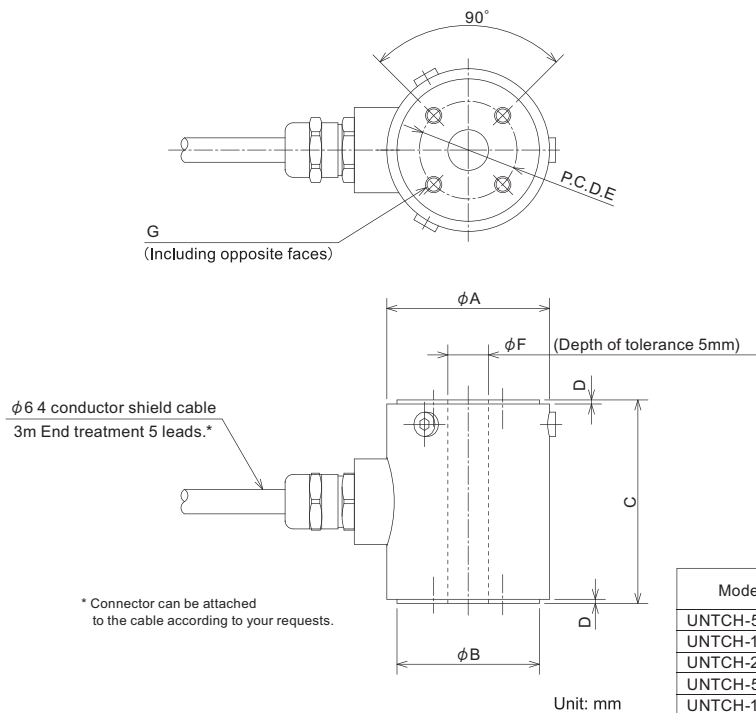
Application Example



Wiring Diagram



External dimension



* Connector can be attached to the cable according to your requests.

Model	Deflection at rated	Natural frequency	Weight	φA	φB	C	D	P.C.D.E	φF	G
UNTCH-5KN	0.025mm	13kHz	0.3kg	40	35h7	50	1	24	10H8	8-M4 Depth 8
UNTCH-10KN	0.025mm	7kHz	0.95kg	62	55h7	70	2	44	18H8	8-M5 Depth 8
UNTCH-20KN	0.045mm	11kHz	1.0kg	62	55h7	70	2	44	18H8	8-M5 Depth 8
UNTCH-50KN	0.050mm	14kHz	1.0kg	62	55h7	70	2	44	18H8	8-M5 Depth 8
UNTCH-100KN	0.065mm	20kHz	1.0kg	62	55h7	80	2	44	18H8	8-M5 Depth 8